



ESE Infrared lamps for PET Processing

Victory has a comprehensive range of linear quartz infrared lamps for industries using PET (PolyEthylene Terephthalate) in products such as food packaging and beverage containers.

The high quality and longevity of Victory PET lamps means they are used world-wide by many machine manufacturers.

Victory Lighting has been manufacturing high quality infrared lamps for over 30 years. Throughout this time, our lamps have continually evolved & improved to meet the needs of the user.

We have recently launched our new ESE lamp range.

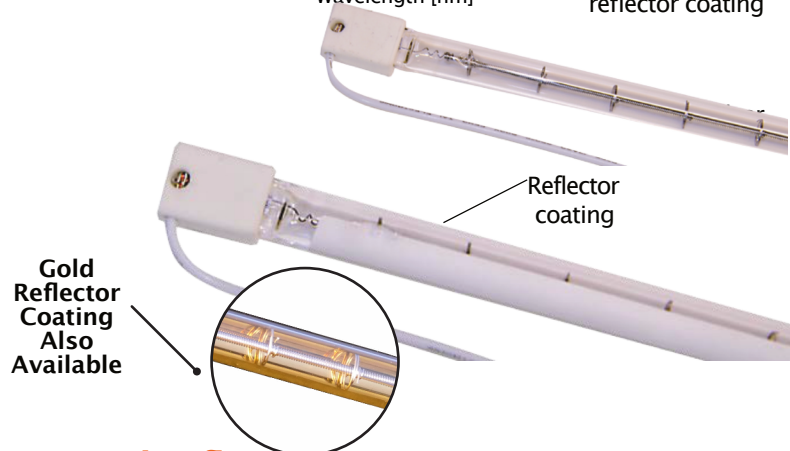
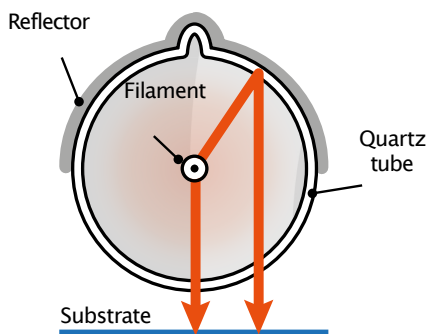
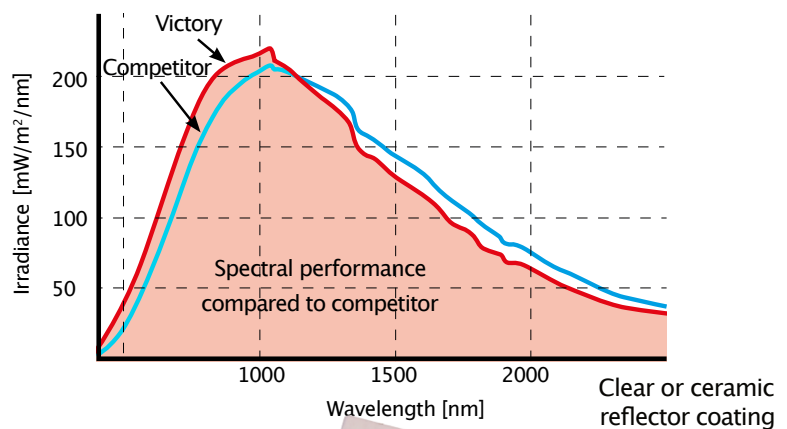
These new lamps which have been developed by our experienced Technical Team to provide increased performance while reducing energy consumption by approximately 17.4%.

Along with our standard comprehensive range of lamps, we also work closely with original equipment manufacturers who may require their own specification of branded lamps.

We work closely with our customers at every stage to deliver their bespoke requirements, which can be ordered in quantities as low as 30 pieces.

Best performer

Victory infrared PET lamps provide more energy output per watt than their major competitors so will save on energy cost.



Integrated reflectors

Victory PET lamps have a built in ceramic reflector system that focuses infrared energy forward in the direction where it is required, reducing the loss of heat to the rear and improving efficiency. Infrared heat is emitted forward through the quartz tubing or reflected off the back of the tube to then pass out through the front.



Victory's Range of PET Lamps

Shown below is a small sample of the lamps we are able to provide. If you require alternative lamps which are not listed, please contact our Sales Team who will be able to provide additional assistance.

Manufacturer	Wattage	Victory	Toshiba	Philips	
SIDEL	2000W	54242055-ESE	JHC 235V2000W 280 BH2	13213Z/98	
	2500W	64402555-ESE	JHC 400V2500W 315 BH	14106Z/98	
	3000W	64403055-ESE	JHC 400V3000W 315 BH	14111Z/98	
KRONES	1200W	64231251-ESE	JHC 235V1200W 155BfH1	14134Z/98	
	1600W	64231652-ESE	JHC 235V1600W 155BfH1	14135Z/98	
	2500W	64402551-ESE	JHC 400V2500W 280 BH	14143Z/98	
	3000W	64403050-ESE	JHC 400V3000W 280 BH	14144Z/98	
SIG (KRUPP)	1200W	64231251-ESE	JHC 235V1200W 155 BfH1	14134Z/98	
	1200W	64141252-ESE	JHC 144V1200W 155 BfH1	13561Z/98	
	1200W	64141253-ESE	JHC 144V1200W 155 JcH	13561Y/98	
	1600W	64231652-ESE	JHC 235V1600W 155 BfH1	14135Z/98	
	1600W	64141653-ESE	JHC 144V1600W 155 BfH	13568Z/98	
	1600W	64141652-ESE	JHC 144V1600W 155 JcH	13568Y/98	
	2000W	54242053-ESE	JHC 235V2000W 280 BfH4	14136Z/98	
	2500W	64242550-ESE	JHC 235V2500W 280 BfH3	14137Z/98	
	SIPA	2000W	64242525-ESE	JHC 235V2000W 280 BfH	14103Z/98
		2000W	6423205N-ESE	JHC 230V2000W 500 BfH	6423205N
3000W		64243055-ESE	JHC 235V3000W 280 BH	14121Z/98	
3000W		64233050-ESE	JHC 235V3000W 700 BfH2	14107Z/98	
SMI	2500W	64402580-ESE	JHC 400V2500W 500 NH	N/A	
ADS	1000W	64241052-ESE	JHC 235V1000W 272 BfU1	13195Z/98	
	2000W	64242052-ESE	JHC 235V2000W 280 BfU1	N/A	
SIDE	1000W	64241052-ESE	JHC 235V1000W 270 BfU1	13195Z/98	
	2000W	64242052-ESE	JHC 235V2000W 280 BfU1	13213Z/98	

We can also supply lamps for KHS

Applications

- PET Bottle Blowing
- Welding
- Composite Bonding
- Catering
- Heat Shrinking
- Soldering
- Adhesive Curing

Victory Lighting has a network of warehouses throughout the world. This allows us to fulfil orders from the nearest warehouse location, providing the best possible lead times with reduced shipping costs.

Trusted by manufacturers

- High efficiency: reduced running cost
- Life 6000 hours: reduced replacement cost
- Most energy efficient reflector coating
- Compatible with all machine models
- Clear, ceramic or gold coated
- Clear lamps compatible with external reflectors



VICTORY

Victory Lighting (UK) Ltd

www.victorylighting.co.uk email: sales@victorylighting.co.uk
tel. +44(0)1727 815137

© Victory Lighting (UK) Ltd 2021

The information contained in this literature is for general information purposes only. Victory Lighting (UK) Ltd endeavours to keep the information up to date and correct, but makes no representations or warranties of any kind, express or implied, about the completeness, accuracy, reliability, suitability or availability with respect to the information, products, services, or related graphics contained in this literature.

Victory Lighting (UK) Ltd accepts no liability for any loss or damage including without limitation, indirect or consequential loss or damage, or any loss or damage whatsoever arising from loss of data or profits arising out of, or in connection with, the use of this literature.

Distributed by